

FOR LEASE

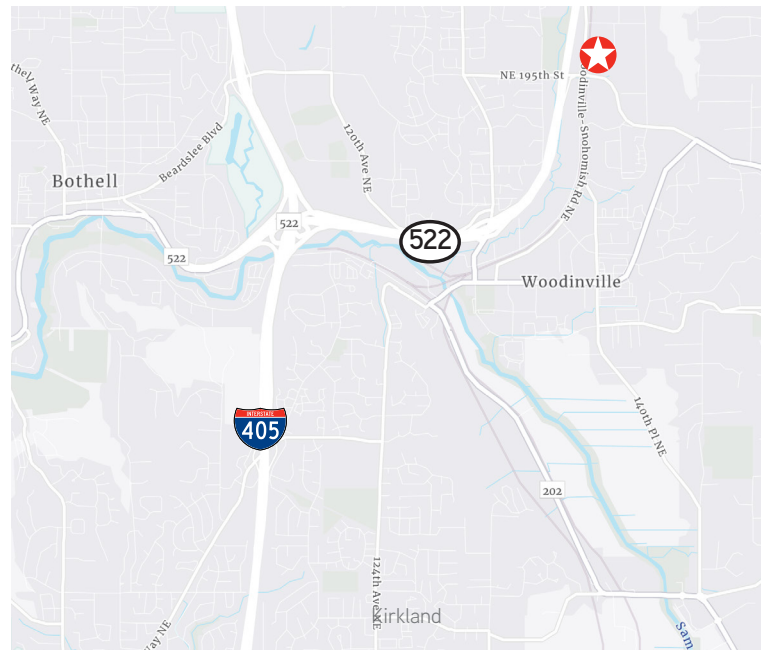
14071-B NE 200th Street, Woodinville, WA

Underwood Gartland 140



SPACE DETAILS

- › Approximately 12,236 SF total
 - › 9,695 SF - warehouse
 - › 2,541 SF - office
- › \$0.90/SF/Mo, NNN - warehouse
- › \$1.80/SF/Mo, NNN - office
- › NNN = \$0.22/SF/Mo
- › Building signage available
- › Close to freeway
- › Available November 1, 2020
- › Hydraulic dock levelers
- › Three dock-high and one grade-level loading doors
- › 24' clear height in warehouse



DAVID GUNTHER
425 453 4546
BELLEVUE, WA
david.gunther@colliers.com

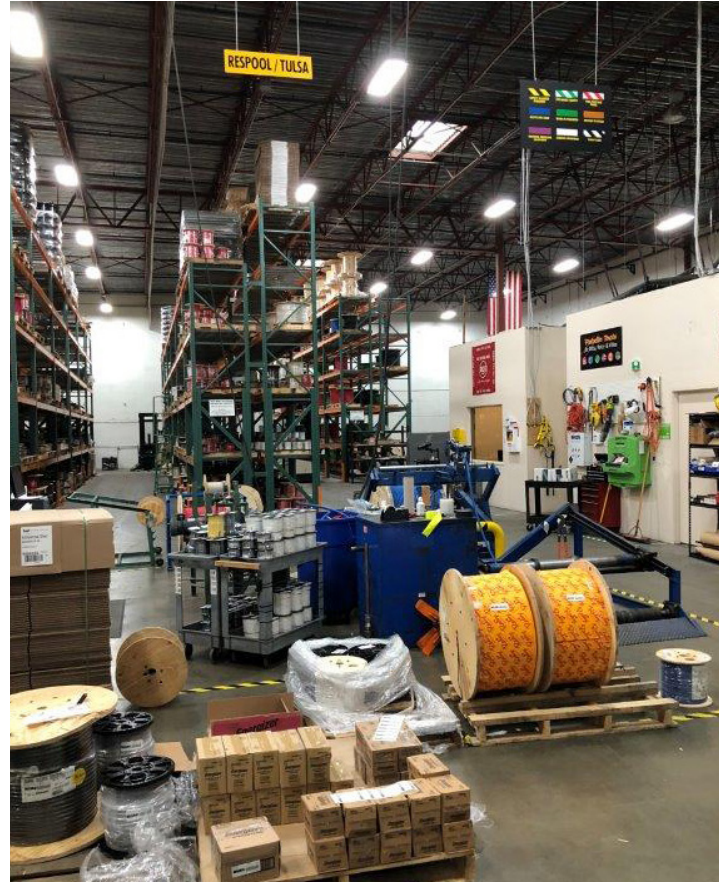
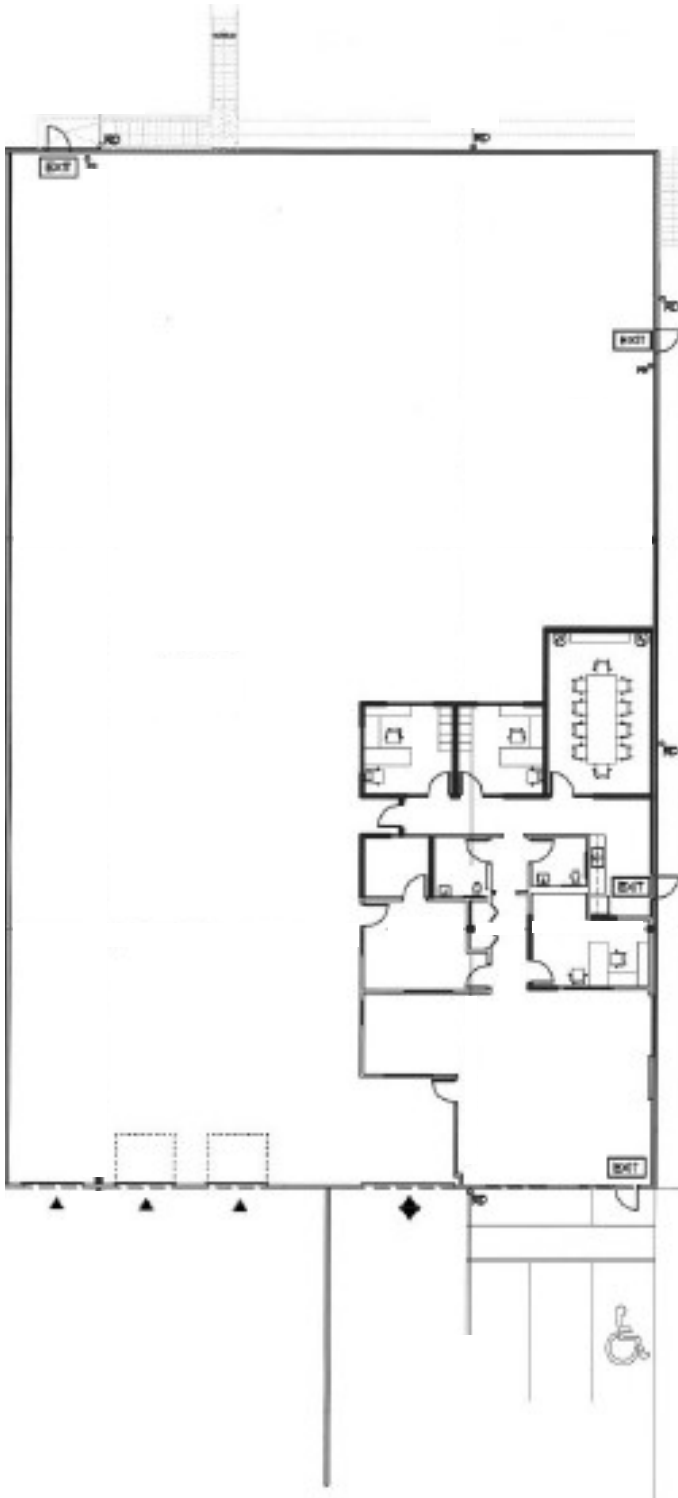
DEREK HEED
425 453 3133
BELLEVUE, WA
derek.heed@colliers.com

COLLIERS INTERNATIONAL
11225 SE 6th Street, Suite 240
Bellevue, WA 98004
425 453 4545 | www.colliers.com



UNDERWOOD GARTLAND 140

14071-B NE 200th Street, Woodinville, WA



This document has been prepared by Colliers International for advertising and general information only. Colliers International makes no guarantees, representations or warranties of any kind, expressed or implied, regarding the information including, but not limited to, warranties of content, accuracy and reliability. Any interested party should undertake their own inquiries as to the accuracy of the information. Colliers International excludes unequivocally all inferred or implied terms, conditions and warranties arising out of this document and excludes all liability for loss and damages arising there from. This publication is the copyrighted property of Colliers International and/or its licensor(s). © 2020. All rights reserved.

DAVID GUNTHER
425 453 4546
BELLEVUE, WA
david.gunther@colliers.com

DEREK HEED
425 453 3133
BELLEVUE, WA
derek.heed@colliers.com

COLLIERS INTERNATIONAL
11225 SE 6th Street, Suite 240
Bellevue, WA 98004
425 453 4545 | www.colliers.com

